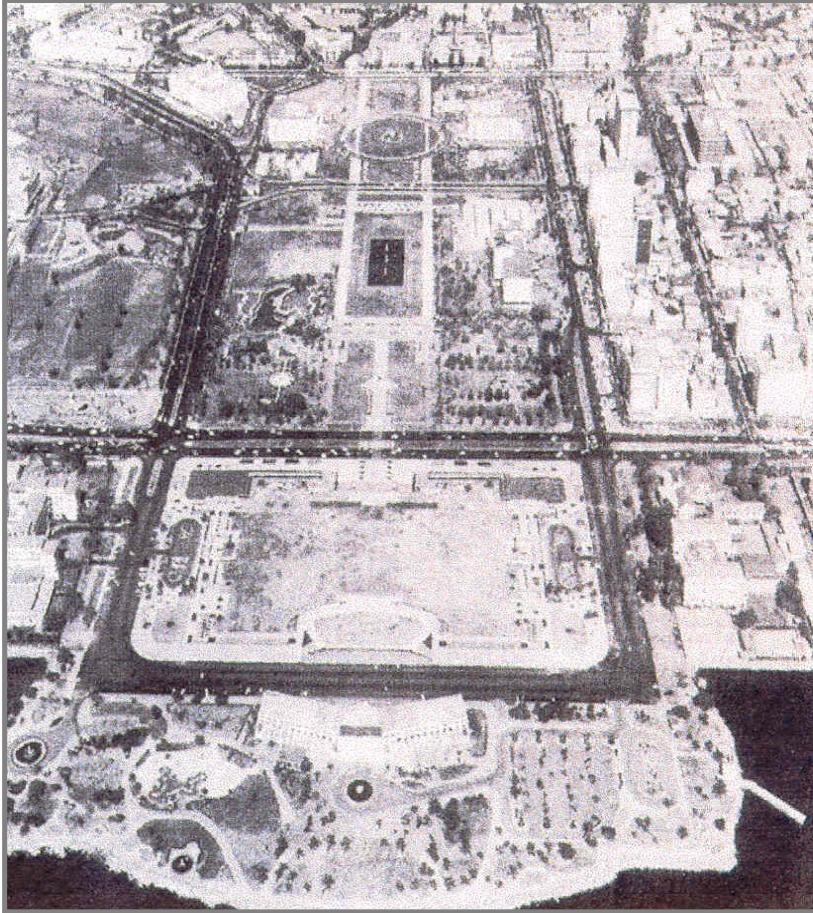


Rizal Park Development Project

Detailed Engineering Design of the Rizal Park

**Client**

National Park Commission

Project

Rizal Park Development Project

Location

Manila, Philippines

Project Period

Start 1967

End 1967

Project Description

The Rizal Park, located in downtown Manila required the complete beautification and modernization. The modernization effort included the design of gardens, lagoons, pools, and grandstand as well as the installation of considerable fill to provide proper grading.

The Project Construction Cost was estimated at US\$ 1.2 Million.

Scope of Services

Trans-Asia provided the Detailed (Civil, Structural, Mechanical and Electrical) Engineering Design Services.



Making
Technology
Work