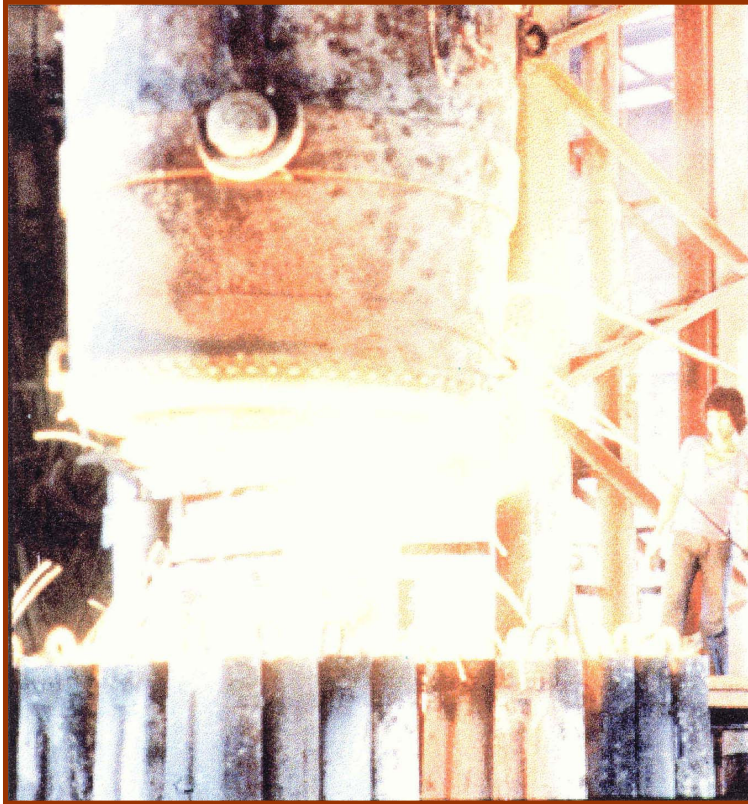


# TRANS-ASIA

## *Philippine Associated Smelting and Refining Corporation (PASAR) Plant*

### Project Management of a Smelting and Refining Plant

**Client**

Philippine Associated Smelting and Refining Corporation (PASAR)

**Project**

Philippine Associated Smelting and Refining Corporation (PASAR) Plant Expansion

**Location**

Leyte, Philippines

**Project Period**

For the Smelter and Refiner Area

Start July 1991

End April 1993

For the Pier Extension

Start June 1992

End November 1993

**Project Description**

The PASAR Plant Expansion located in the Leyte Industrial Development Estate in Isabel, Leyte is the only copper smelting and refining plant in the Philippines. The 25% expanded capacity of the plant has been equipped with the following facilities:

- A. Smelter Area
  - 1. Modification of Concrete Burner
  - 2. Modification of Waste Heat Boiler
  - 3. Construction of Electrostatic Precipitator and Control Room
  - 4. Construction of Oxygen Plant
  - 5. Construction of 20 MVA Substation and Control Room
- B. Refinery Area
  - 1. Construction of Tankhouse
  - 2. Construction of Circulation Room
  - 3. Construction of Liberator Room
  - 4. Modification of Raw Slime Leaching Area
  - 5. Modification of Sulfuric Acid Line
- C. Pier Extension
  - 1. Construction of 64-meter Causeway Approach and Plate Girder Deck Bridge
  - 2. Extension and Reinforcement of Crane Rail Beam
  - 3. Construction of 50-meter Pier Head Extension
  - 4. Construction of two (2) Breasting Dolphin



Making  
Technology  
Work

# TRANS-ASIA

5. Construction and Installation of Conveyor System
6. Construction of Pier Roadway and Approach
7. Electro-Mechanical Work Installation

## **Scope of Services**

Trans-Asia was responsible for the construction and post-construction phases of the Plant Expansion.

Works undertaken by the Company included equipment inspection, supervision of the fabrication and installation of concrete commercial cells, structural steel fabrication and installation, electrical, mechanical, piping, sanitary, architectural, instrumentation, painting, water proofing and acid proofing works. Installation of 20 MA Transformer and Substation Equipment of Oxygen Plant, Motors, Rectifiers for Storage Tanks were also supervised.

For the Pier Extension, works undertaken included the supervision of the concrete piles and stringers fabrication including pile driving, installation of Conveyor Frames and Structures, Electrical and Mechanical Works, installation of Steel Plate Girder Bridge, installation of Zinc Anodes for driven steel pipe piles and Roadway approach concreting and riprapping.



Making  
Technology  
Work