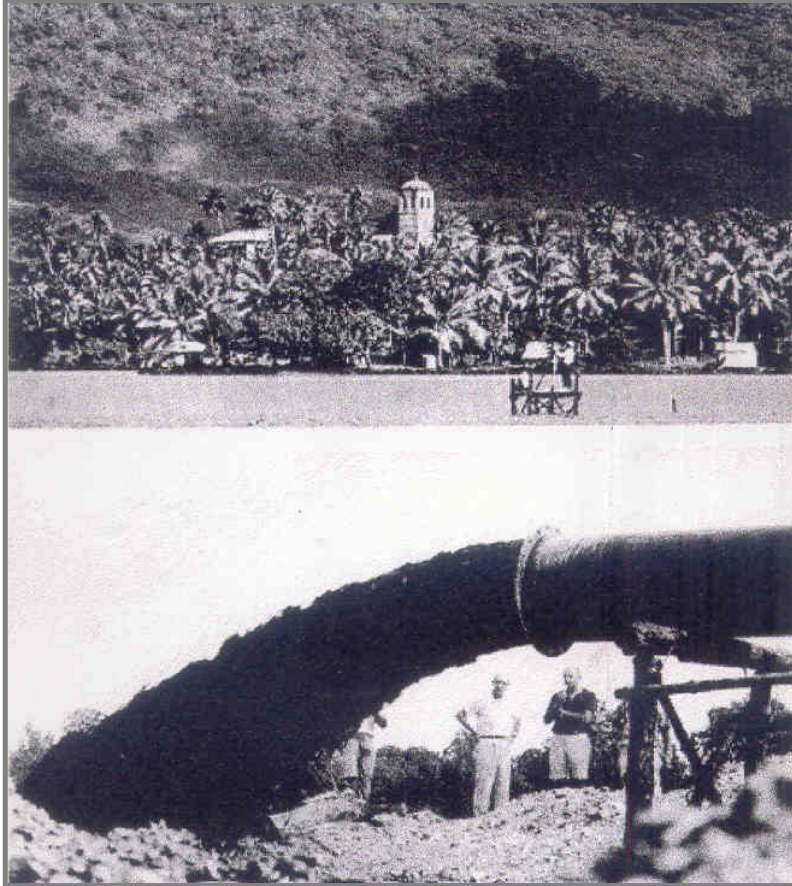


## *Ponape Airport*

Engineering Services and Construction Supervision of an Airport



**Client**

Department of Labor

**Project**

Ponape Airport

**Location**

Takatik Island  
Micronesia

**Project Period**

Start 1970

End 1971

**Project Description**

Built on a virgin site at Tikatik Island, the Ponape Airport is capable of accommodating Boeing 727-type aircraft on a 6,000 feet runway, which required some 1.2 million cubic yards of hydraulic fill. The project was completed at an estimated construction cost of US\$ 2.2 million.

**Scope of Services**

Trans-Asia performed Topographic and Hydrographic Surveys as well as Construction Supervision Services.



Making  
Technology  
Work